

BRENLO

CUSTOM WOOD MOULDINGS & DOORS

Times



All about WHITE OAK - Industry Insights

White Oak is one of the most sought-after wood species across the globe. There has always been an upward trend in White Oak's demand especially from parts of Europe. However, the domestic demand for white oak has also surged in recent years.

THE MOST POPULAR AND EXPENSIVE WHITE OAK CUTS: A COMPARISON





The following image shows the basic differences between different white-oak cuts that the market offers.



Click to Read Full

-  Most Expensive White Oak Cuts
-  Understanding Supply Chain
-  Forecast : White Oak Price
-  Brenlo's Response



		COMPARISON		
		Flat Sawn	Quarter Sawn	Rift Sawn
	Grain	Contour	Fleck Effect	Straight Grain
	Availability	High	Medium	Low
	Difficulty to achieve	Low	Medium	High
	Price	Low	Medium	High
	Appearance			

BRENLO STOCK INVENTORY - WHITE OAK



Scan this QR code
to download our catalogue



BRENLO
CUSTOM WOOD MOULDINGS & DOORS

WHITE OAK - RIFT CUT

Stain Grade - Slipmatch

1/4" X 4 FT X 8 FT - G1S - P.C. - A-Face

1/2" X 4 FT X 8 FT - G1S - P.C. - A-Face

3/4" X 4 FT X 8 FT - G1S - P.C. - A-Face

G1S - Good One Side

D41x4 **3/4" x 3-1/2"**

Available in flat cut and rift cut

D41x6 **3/4" x 5-1/2"**

Available in flat cut and rift cut

D41x2 **3/4" x 1-1/2"**

Available in rift cut

CLICK



Did you know?

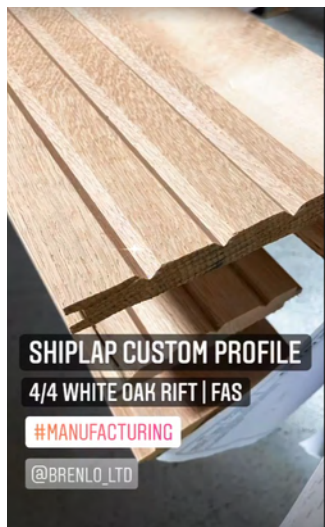
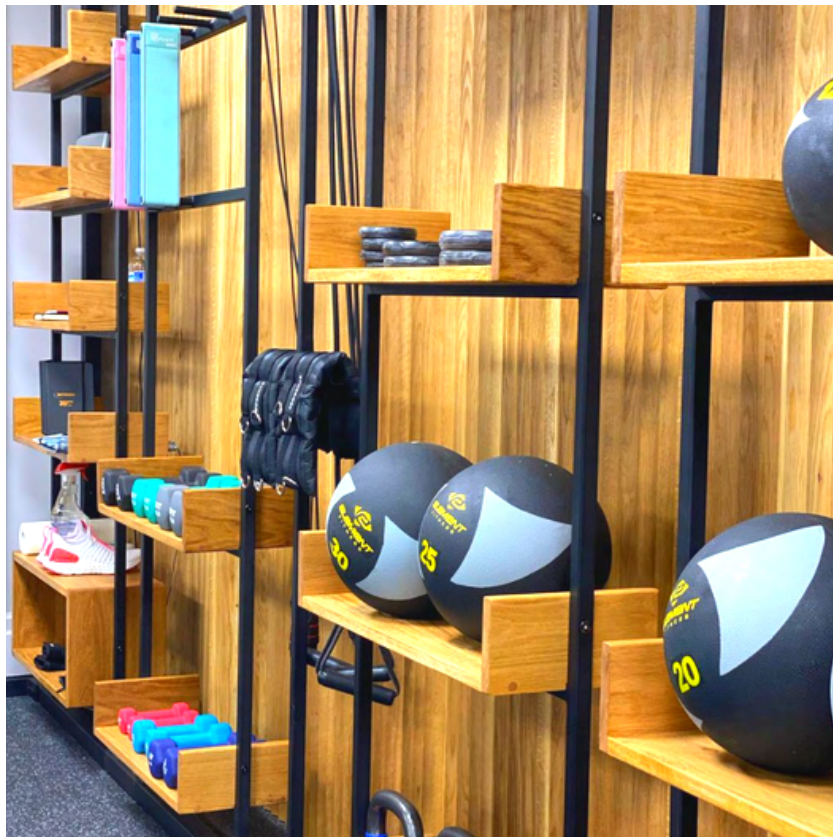
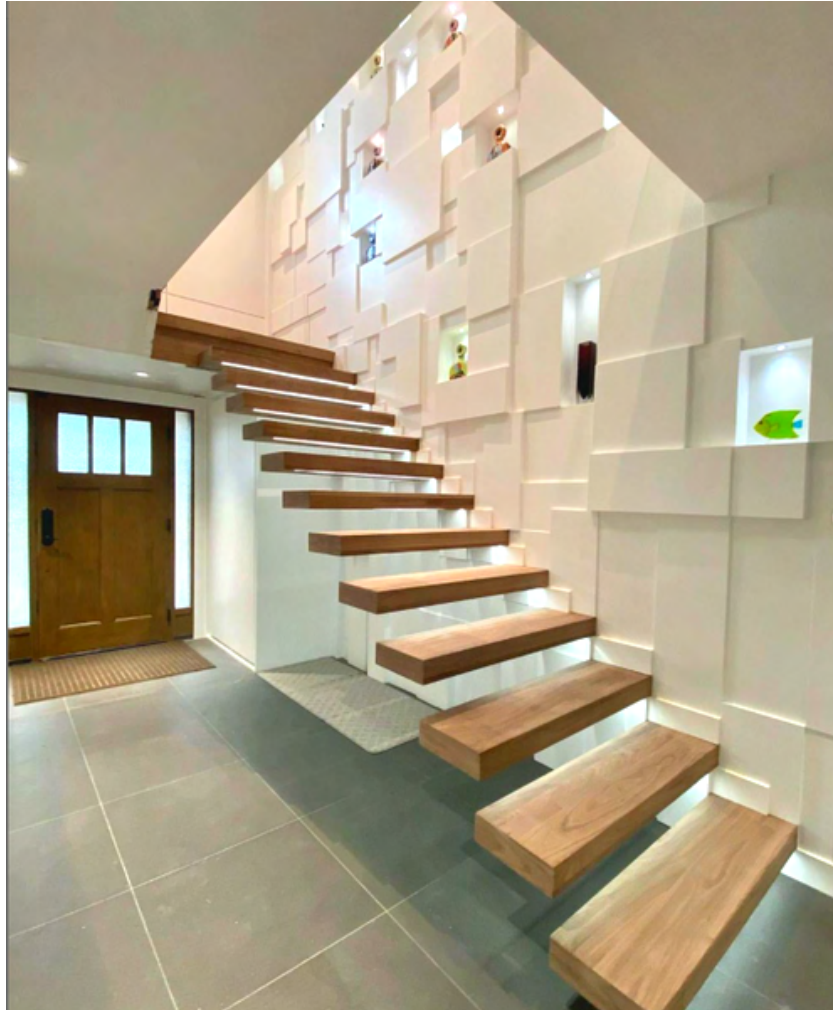




brenlo_ltd

PROJECT HIGHLIGHTS OF THE MONTH

FOLLOW US



RED OAK

#MANUFACTURING

My di love you baby! (hea...
Sun! Masa

SHIPLAP CUSTOM PROFILE

4/4 WHITE OAK RIFT | FAS

#MANUFACTURING

@BRENLO_LTD

Bill Damery

Featured Employee

BRENLO FAMILY



Having more than 22 years of experience in manufacturing; with a focus on sales, operations and production, Bill has gained a well-earned reputation in the industry. Before joining as Vice President at Brenlo; Bill has held several key positions with world leaders in the plastic industry and has built sustainable and profitable growth strategies.

With a progressive experience throughout and an expertise in supply chain management, inventory builds, equipment moves and more, Bill is contributing immensely in building an efficient business supply chain at Brenlo.

We admire his attention to details, soft skills and his ability to integrate international standards to create value, mitigate risk and deliver a competitive advantage.

Interesting Fact: Bill is married to his high school sweet heart of 24 years and enjoys spending time with family and friends at their Muskoka cottage.

When not working, Bill can be found in the outdoors hiking with his dog Figgy, an English springer spaniel, or water skiing, or paddling a kayak.

Today, we are celebrating his presence and his incessant efforts at Brenlo.



CORPORATE SOCIAL RESPONSIBILITY

Brenlo had the pleasure of sponsoring a charitable event 'Unsung & Emerging' for mental health awareness. This musical show aimed at reaching out to the masses and creating awareness about the key role one can play in identifying and supporting mental health for their loved ones.



MEDIA

VALENTINES'S DAY AT BRENLO



**STAY
CONNECTED**



**REGULAR
HOURS**

Hours of Operation

7.30am - 4.30pm - Monday to Friday

Showroom

65 Worcester Rd, Etobicoke, ON M9W 5N7

Open to Public - Proper PPE will be required upon entering the building

Next Day Delivery

Available to orders over \$350

Any material under \$350 will need to be picked up or arranged through a delivery service TOOLBX
<https://www.toolbx.com>

Order desk & Pick up

Same-day pick-up is now available.

Reach us

Phone : +1 (416)749-6857

Email : sales@brenlo.ca